



Melissa Cortes  
Office Coordinator

## Meet our Newest Team Member!

You may have noticed a bright new face around the office—meet our newest team member, Melissa Cortes!

A proud Puerto Rican, Melissa grew up in the beautiful town of Isabela but has certainly racked up some travel miles. She's lived in the Netherlands, Aruba, and Miami before making her way back to the island. And here's a fun fact—she's fluent in Papiamentu, a Creole language with Spanish and Portuguese roots. Talk about a linguistic superpower!

When she's not busy at Spece, Melissa stays active running, cooking, hiking, and getting creative with her daughter through drawing and painting.

Though she loves her island life, Melissa finds peace and happiness exploring new places, especially in Europe, South America, and the Caribbean.

Now, let's talk about her true passion—food! Melissa is a certified foodie, and while Puerto Rican cuisine holds a special place in her heart, a really good sandwich can absolutely make her day. In fact, her dream is to open a cozy, beachside coffee shop where she can serve up delicious sandwiches and good vibes.

Be sure to say hi to Melissa—she's an awesome addition to the team, and she just might have the inside scoop on the best lunch spots!



Do you smell that?

We have a lot of members ask about the pleasant smell that is wafting throughout all of our spaces. We've added a proprietary blend of essential fragrances and oils to our diffusers in the air ducts and common areas.

We hope you love it!

# InnerSpece

*DID YOU KNOW?*

Newsletter

March 2025  
**Issue # 20**

Spece spans five floors of the VIG Tower—Penthouse, 11th, 8th, 7th, and Basement—as well as our location in Guaynabo. Each space is thoughtfully designed to offer a unique experience tailored to our members' needs.



## Penthouse

Enjoy breathtaking views alongside dedicated support from our team, whose desks are located on this floor.



## 8th Floor

A serene, private space designed for those who prefer a quiet retreat away from the lively penthouse lounge.



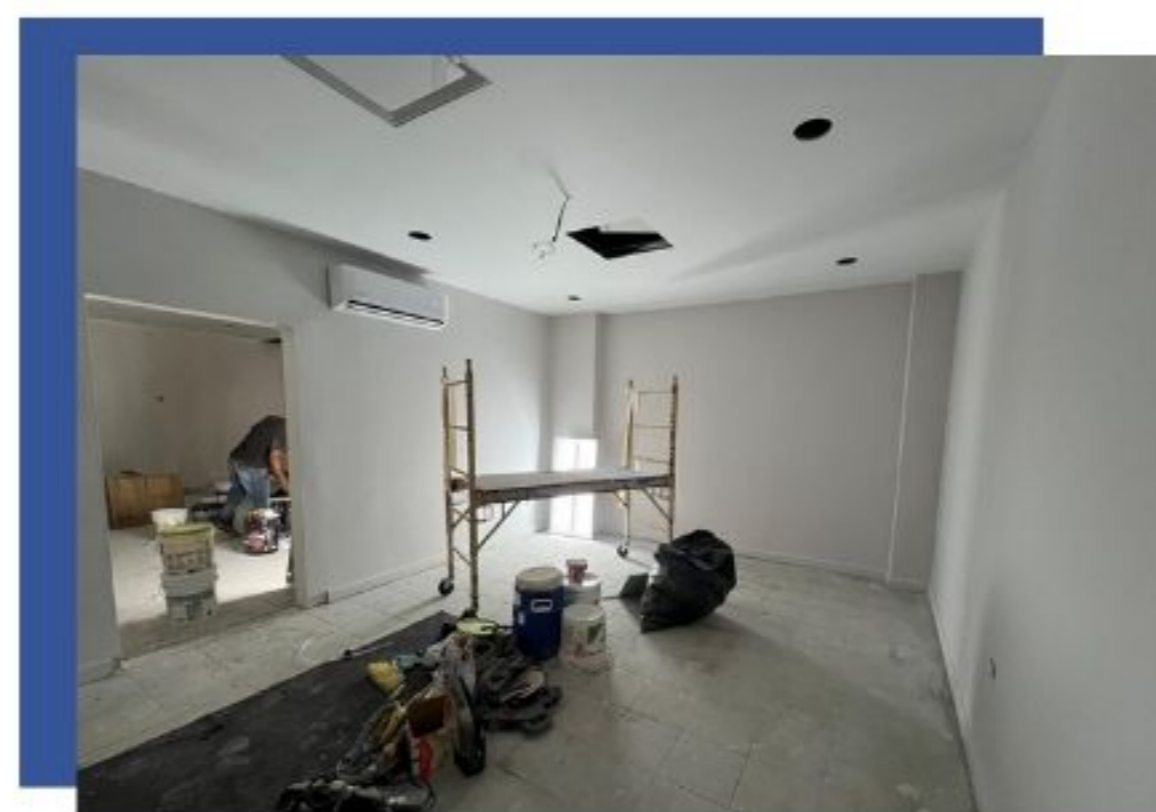
## 11th Floor

Ideal for day-pass users, this floor features private booths perfect for focused work in a cozy setting.



## Guaynabo

Featuring a noise-canceling phone booth and a prime walkable location near top restaurants and shopping spots.



## Flagship

These flagship offices are built for companies seeking a larger, dedicated workspace. While still managed by our team, these offices offer a more personalized environment exclusively for your company.

*Cheers!*



Thank you to our members who joined us for this month's Third Thursday Happy Hour!

Every Spece location delivers the same exceptional service, with a unique touch that reflects the character of each floor.



 **Spece**  
787-417-7300